

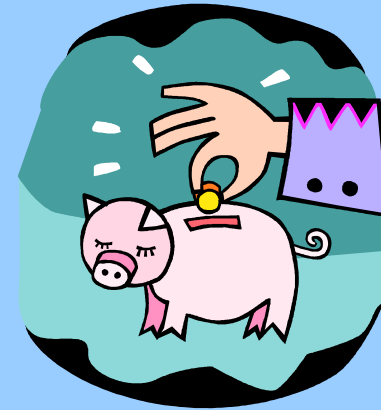


Selecting A Feed For Your Horse

What Does It Cost?

What Does It Cost?

7200 calories/day



- 6 lbs Oats ----- (\$.84/day ----- \$7.00/bag)
- 4.8 lbs Strategy --- (.86/day ----- \$9.00/bag)
- 3.7 lbs Ultium --- \$1.11/day----- \$15.00/bag)
- 4.4 lbs. Omolene (\$.88/day ---- \$10.00/bag)

- 4.75 lbs Oats ----- (\$7.00/bag = \$.67/day)
- 1 lb of Born To Win - (\$15/bag = \$.30/day)
- **TOTAL BALANCED OATS = \$.97/day**

Starch

- Corn -- 80-85%
- Oats -- 48-52%
- Omolene 35-36%
- Strategy 27%
- Equine Senior. . 19-20%
- Ultium 17%



\$.85/Head/Day

- **If Oats are \$5.70/bag, you are not saving any dollars!**
- **55 divided by 4.75 lbs x 50 lbs**

